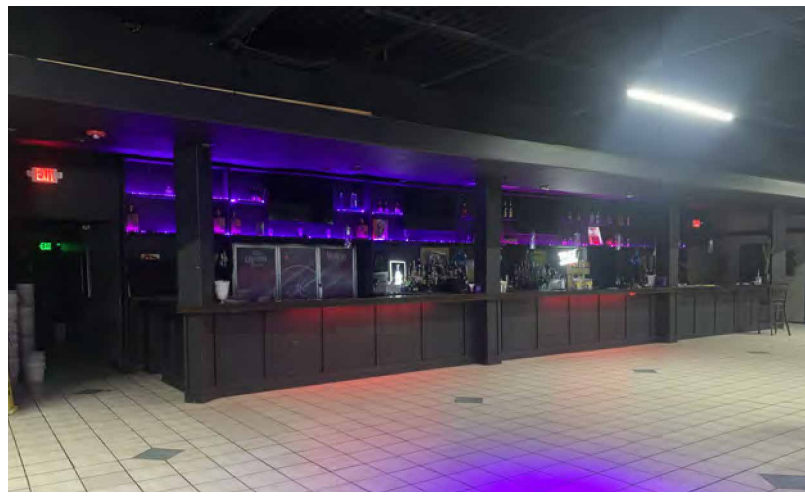
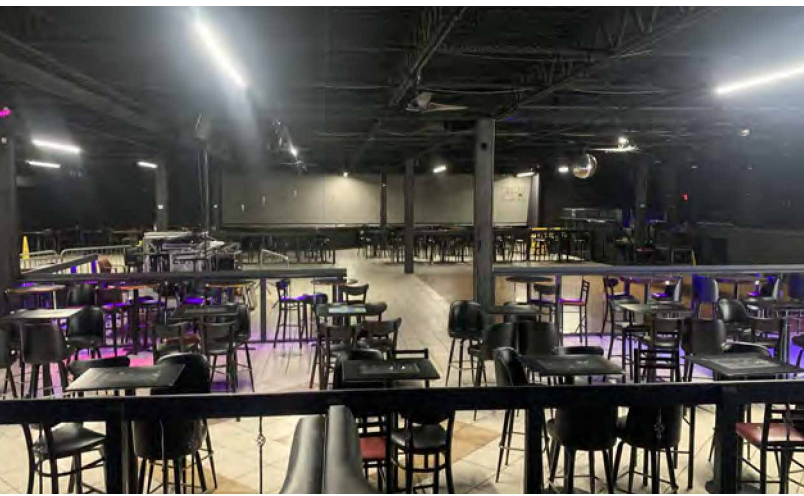




SOUTHWEST PLAZA SHOPPING CENTER

806-810 W. 56 Highway, Olathe, Kansas



LEASE RATE: \$10/SF NNN | 7,000-14,500 SF

DEMOGRAPHICS

	1 mile	3 miles	5 miles
Estimated Population	6,826	66,012	138,033
Avg. Household Income	\$104,596	\$115,187	\$134,662

- 2nd generation entertainment venue with kitchen
- Planned remodel for exterior facade coming soon
- Potential pad site available
- Grocery anchored with plenty of parking
- Can be demised down to 7,000 SF
- Highway visibility with traffic counts of 36,000 cars per day



CLICK HERE TO VIEW MORE LISTING INFORMATION

For More Information Contact:

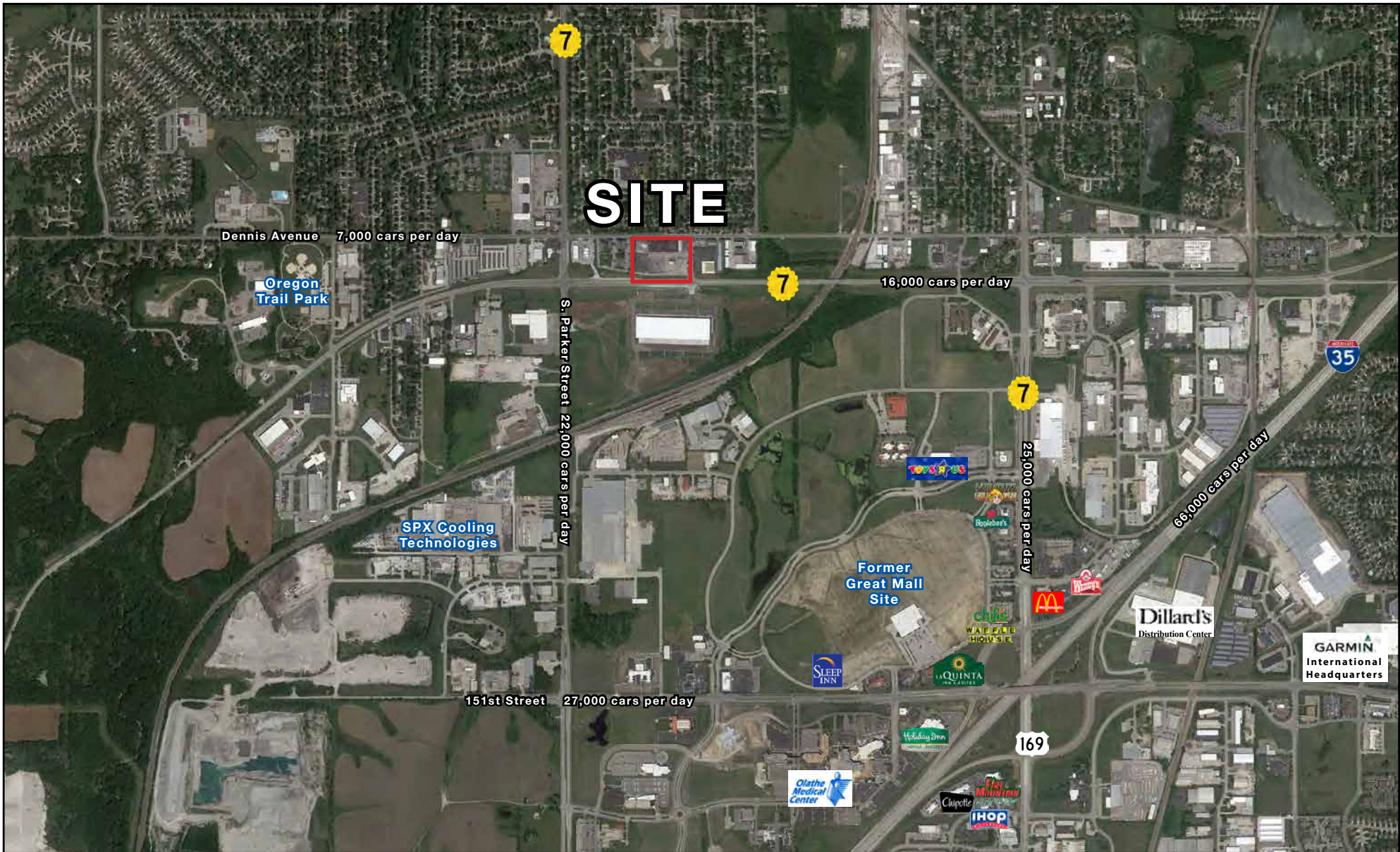
GARRETT COHOON | 816.412.7315 | gcohoon@blockandco.com

DAKOTA GRIZZLE | 816.412.7395 | dgrizzle@blockandco.com

Exclusive Agents



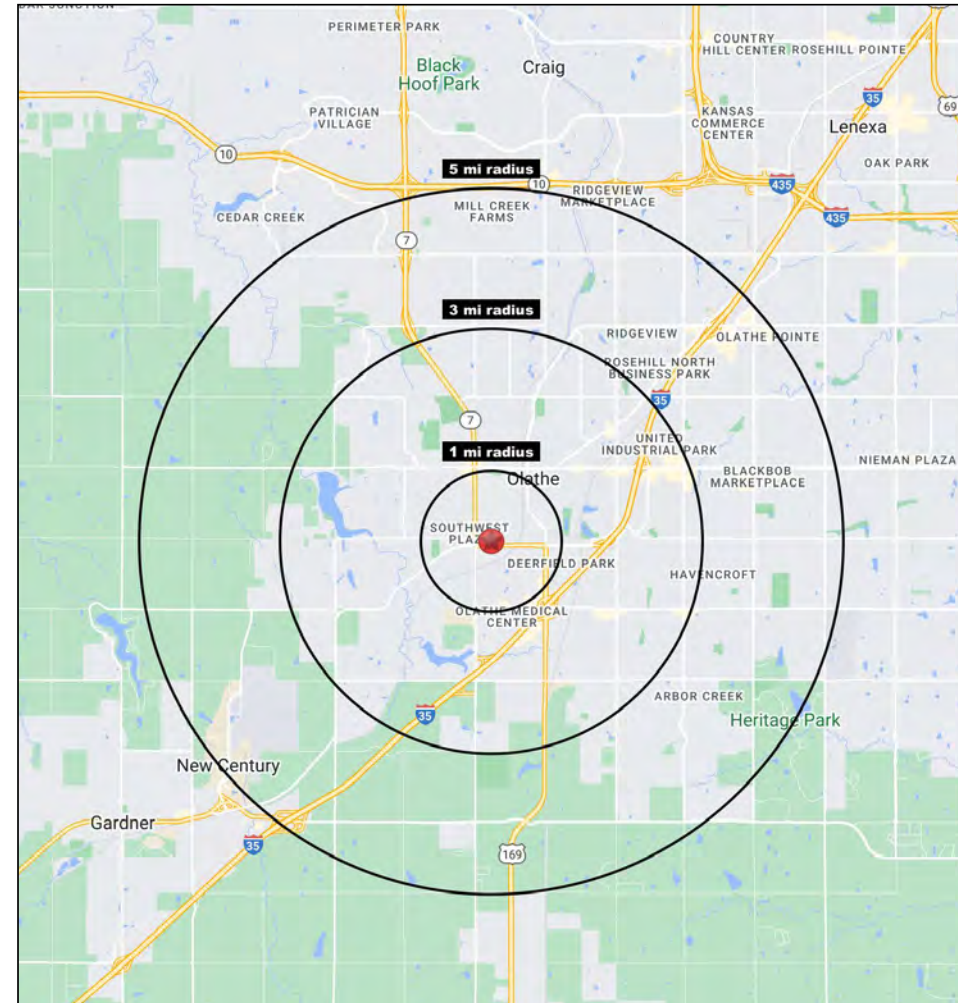
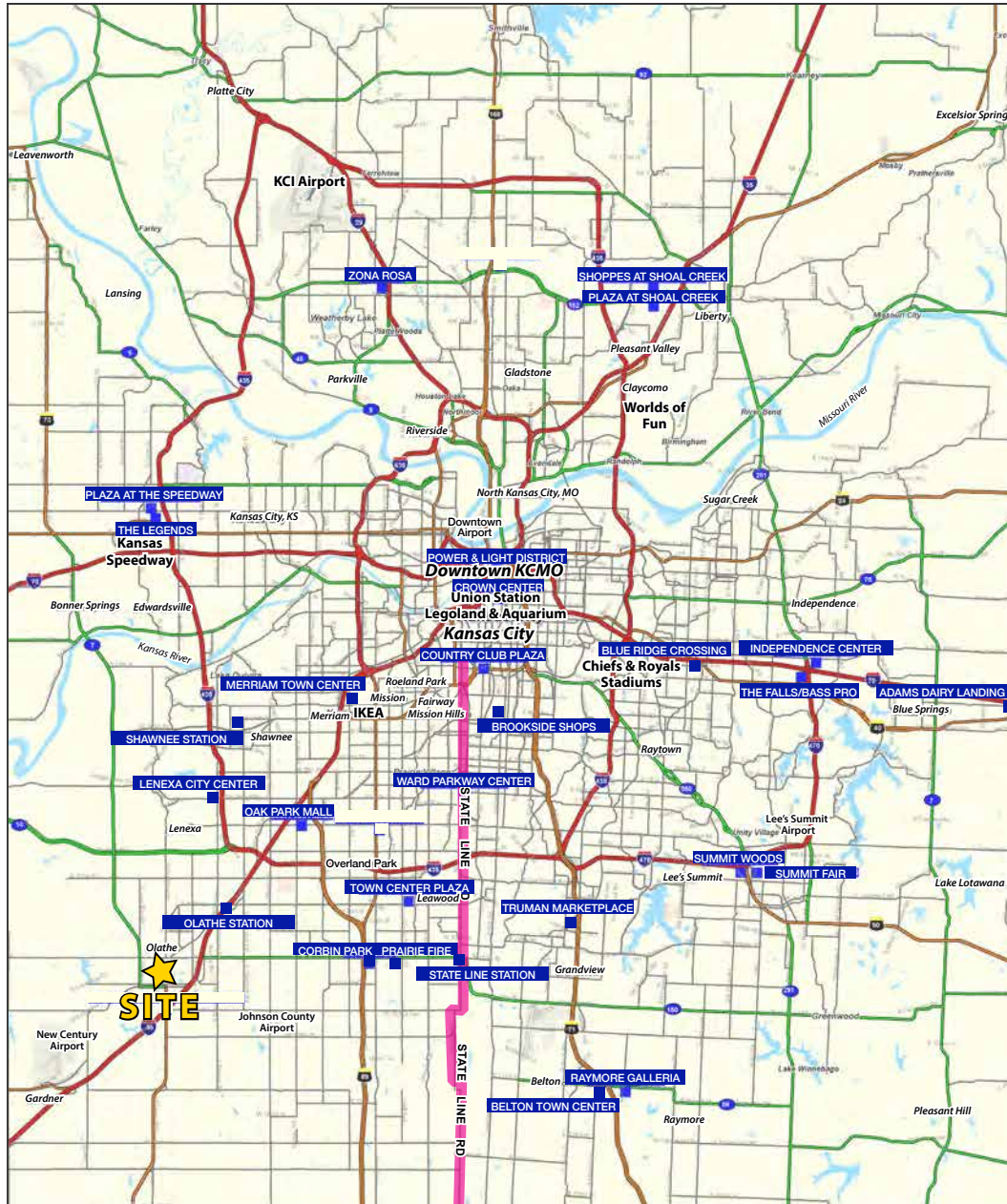
AERIAL





SOUTHWEST PLAZA SHOPPING CENTER

806-810 W. 56 Highway, Olathe, Kansas





SOUTHWEST PLAZA SHOPPING CENTER

806-810 W. 56 Highway, Olathe, Kansas

806 W Old 56 Hwy Olathe, KS 66061	1 mi radius	3 mi radius	5 mi radius
Population			
2023 Estimated Population	6,826	66,012	138,033
2028 Projected Population	7,101	68,264	143,222
2020 Census Population	6,690	64,624	136,106
2010 Census Population	6,705	59,902	121,938
Projected Annual Growth 2023 to 2028	0.8%	0.7%	0.8%
Historical Annual Growth 2010 to 2023	0.1%	0.8%	1.0%
2023 Median Age	34.7	34.0	34.0
Households			
2023 Estimated Households	2,508	23,605	48,643
2028 Projected Households	2,672	24,990	51,621
2020 Census Households	2,423	22,828	47,286
2010 Census Households	2,424	21,110	42,367
Projected Annual Growth 2023 to 2028	1.3%	1.2%	1.2%
Historical Annual Growth 2010 to 2023	0.3%	0.9%	1.1%
Race and Ethnicity			
2023 Estimated White	65.9%	73.8%	76.2%
2023 Estimated Black or African American	5.9%	7.7%	7.2%
2023 Estimated Asian or Pacific Islander	1.6%	4.1%	5.0%
2023 Estimated American Indian or Native Alaskan	0.7%	0.4%	0.4%
2023 Estimated Other Races	25.9%	13.8%	11.2%
2023 Estimated Hispanic	29.0%	14.5%	11.4%
Income			
2023 Estimated Average Household Income	\$104,596	\$115,187	\$134,662
2023 Estimated Median Household Income	\$81,311	\$99,337	\$112,459
2023 Estimated Per Capita Income	\$38,798	\$41,369	\$47,672
Education (Age 25+)			
2023 Estimated Elementary (Grade Level 0 to 8)	9.2%	3.1%	2.5%
2023 Estimated Some High School (Grade Level 9 to 11)	9.1%	5.1%	3.4%
2023 Estimated High School Graduate	24.1%	19.1%	16.3%
2023 Estimated Some College	21.6%	20.6%	19.4%
2023 Estimated Associates Degree Only	13.2%	9.4%	8.2%
2023 Estimated Bachelors Degree Only	14.7%	26.0%	30.9%
2023 Estimated Graduate Degree	8.1%	16.6%	19.2%
Business			
2023 Estimated Total Businesses	259	2,002	3,617
2023 Estimated Total Employees	4,175	28,072	50,912
2023 Estimated Employee Population per Business	16.1	14.0	14.1
2023 Estimated Residential Population per Business	26.3	33.0	38.2

©2023. Sites USA. Chandler, Arizona. 480-491-1112 Demographic Source: Applied Geographic Solutions 4/2023. TIGER Geographv - RS1

